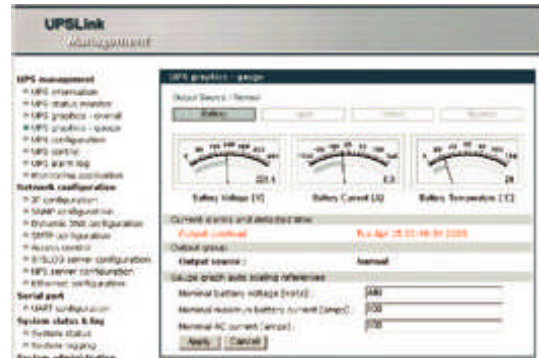


# UPSLink (Uninterruptible Power Supply) Series, UPSLink100

UPS Web/SNMP Card

Last Updated: 28 May, 2003



## Features

- Remote management (monitor/control) of a UPS by providing Web server and SNMP agent on 32bit+Linux platform
- Communicates with a UPS via RS232 and with network via 10/100Base-T Ethernet
- Supports UPS MIB and MIB II
- Supports various commercial NMS
- Easy-to-use UPS management through Web interface
- Multi-language support on the Web interface
- Supports event logging and E-mail/SNMP trap notification for management purposes
- Supports strong security checks
- Maximum flexibility for user customization
- Windows-based application to detect and configure the UPSLink

The **UPSLink** is an accessory card that enables a UPS to be managed on the network through its serial port. The UPSLink has an embedded Web server and SNMP agent that encompasses the UPS MIB (RFC1628) and MIB II (RFC1213).

Various configuration interfaces such as Telnet, Web and serial console are provided within the UPSLink. The easy-to-use Web interface exports useful management interface to monitor and control a UPS which includes graphical representation of the UPS operation status and gauges.

User ID/password and IP filtering provides secured access to the UPS serial port. Alarm messages from a UPS are logged either inside memory space or to outside NFS or SYSLOG server. The alarms are notified through either E-mail or SNMP trap.

The powerful 32-bit processor, open Linux platform gives maximum flexibility for the user customizations. Users can implant an application that accommodates a specific UPS serial protocol. They could change some features of the Web interface. A development environment and template codes are provided to help customization process. A user-customized code could be easily uploaded to the UPSLink through the Web interface.

The UPSLink truly widens the connectivity and the manageability of a UPS. It is ready-to-use solution meeting all the users' needs for the UPS management over the network.

**SENA**  
TECHNOLOGIES

<http://www.sena.com>

### Specifications

<b>Serial Interface</b>	Connector: DB9 Speed: 1200bps to 230Kbps Flow control: Software(Xon/Xoff) and Hardware(RTS/CTS) Signals: RS232 Rx, Tx, RTS, CTS, DTR, DSR, GND
<b>Network Interface</b>	10/100 BaseT, RJ45 Supports static and dynamic IP assignment
<b>Protocols</b>	ARP, IP/ICMP, TCP, UDP Telnet, HTTP, HTTPS DNS, Dynamic DNS DHCP Client, PPPoE SNMP v1 & v2c (RFC1628 & MIB II) NTP SMTP, SMTP with authentication, POP-before-SMTP MIB MIB II (RFC 1213) UPS MIB (RFC 1628)
<b>Security</b>	User ID & Password Three user groups with different privilege IP filtering

<b>Management</b>	Web, Telnet, Serial console port, HelloDevice manager System information General status information Message logging and delivery Up to 100 messages on the internal memory space Unlimited number of messages on other storage devices E-mail delivery of the logged messages
<b>Diagnostic LED</b>	Power Ready 10/100 BaseT: Link, Act Serial Rx/Tx
<b>Power</b>	Supply voltage: 5VDC Supply current: 1.5A@5V
<b>Environmental</b>	Operating temperature: 0°C to 55°C Storage temperature: -20°C to 66°C Humidity: 90% Non-condensing
<b>Physical Properties</b>	Dimension (L x W x H): 100 x 72 x 25 (mm) 3.9 x 2.8 x 1.0 (in.)
<b>Approvals</b>	FCC(A), CE(A), MIC
<b>Warranty</b>	5-year limited warranty

### Ordering Information

<b>UPSLink100</b>	UPS Web/SNMP Card Includes: CD-ROM for software and manuals Serial console cable Power cable (Optional) CD-ROMs for development platform of embedded applications
-------------------	--

For more information, please visit us at  
<http://www.sena.com>

**U.S. / Canada / South America**  
Tel : +1 (408) 573-7425 Fax: +1 (408) 907-3738

**EU / Africa**  
Tel : +33 (0) 1 53 53 16 29 Fax: +33 (0) 1 70 24 70 90

**Asia / Pacific**  
Tel : +82-2-571-8283 Fax: +82-2-573-7710

**Contact us via E-mail**  
General Information : [info@sena.com](mailto:info@sena.com)  
Sales & Distribution : [sales@sena.com](mailto:sales@sena.com)  
Technical Support : [support@sena.com](mailto:support@sena.com)